

## DATA SHEET

**Code: KT36-1597: Monoclonal Antibody to Parathyroid Hormone (PTH) (N-Terminal)**

<b>Clonality:</b>	Monoclonal
<b>Application:</b>	FACS, IF, IHC
<b>Reactivity:</b>	Human
<b>Gene:</b>	PTH
<b>Gene ID:</b>	5741
<b>Uniprot ID:</b>	P01270
<b>Format:</b>	Purified
<b>Alternative Name:</b>	PTH
<b>Isotype:</b>	Mouse IgG2b Kappa
<b>Immunogen Information:</b>	A synthetic peptide from the N-terminal of human PTH polypeptide

### Description

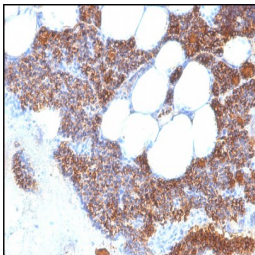
Epitope of this MAb maps in the N-terminus of PTH, a hormone produced by the parathyroid gland that regulates the concentration of calcium and phosphorus in extracellular fluid. This hormone elevates blood Ca<sup>2+</sup> levels by dissolving the salts in bone and preventing their renal excretion. It is produced in the parathyroid gland as an 84 amino acid single chain polypeptide. It can also be secreted as N-terminal truncated fragments or C-terminal fragments after intracellular degradation, as in case of hypercalcemia. Defects in this gene are a cause of familial isolated hypoparathyroidism (FIH); also called autosomal dominant hypoparathyroidism or autosomal dominant hypocalcemia. FIH is characterized by hypocalcemia and hyperphosphatemia due to inadequate secretion of parathyroid hormone. Symptoms are seizures, tetany and cramps. FIH exist both as autosomal dominant and recessive forms of hypoparathyroidism.

### Product Info

<b>Amount:</b>	100 µg
<b>Purification:</b>	Affinity Chromatography
<b>Content:</b>	100 µg in 500 µl PBS containing 0.05% BSA and 0.05% sodium azide. Sodium azide is highly toxic.
<b>Storage condition:</b>	Store the antibody at 4°C; stable for 6 months. For long-term storage; store at -20°C. Avoid repeated freeze and thaw cycles.

### Application Note

Flow Cytometry (0.5-1 µg/million cells in 0.1ml); Immunofluorescence (0.5-1 µg/ml); Immunohistochemistry (Formalin-fixed) (0.5-1 µg/ml for 30 minutes at RT); (Staining of formalin-fixed tissues requires boiling tissue sections in 10mM Citrate Buffer, pH 6.0, for 10-20 min followed by cooling at RT for 20 minutes); Optimal dilution for a specific application should be determined.



Formalin-fixed, paraffin-embedded human Parathyroid stained with PTH Monoclonal Antibody.

For In-Vitro Diagnostic Use. Not For Human Or Animal Consumption.