



DATA SHEET

Alexa Fluor® 700 anti-mouse CD45 Antibody

Catalog# / Size	KT103128 / 100 µg
Clone	30-F11
Other Names	T200, Ly-5, LCA
Isotype	Rat IgG2b, κ

Description CD45 is a 180-240 kD glycoprotein also known as the leukocyte common antigen (LCA), T200, or Ly-5. It is a member of the protein tyrosine phosphatase (PTP) family, expressed on all hematopoietic cells except mature erythrocytes and platelets. There are different isoforms of CD45 that arise from variable splicing of exons 4, 5, and 6, which encode A, B, and C determinants, respectively. CD45 plays a key role in TCR and BCR signal transduction. These isoforms are very specific to the activation and maturation state of the cell as well as cell type. The primary ligands for CD45 are galectin-1, CD2, CD3, CD4, TCR, CD22, and Thy-1.

Product Details

Reactivity	Mouse
Antibody Type	Monoclonal
Host Species	Rat
Immunogen	Mouse thymus or spleen
Formulation	Phosphate-buffered solution, pH 7.2, containing 0.09% sodium azide.
Preparation	The antibody was purified by affinity chromatography and conjugated with Alexa Fluor® 700 under optimal conditions.
Concentration	0.5 mg/ml
Storage & Handling	The antibody solution should be stored undiluted between 2°C and 8°C, and protected from prolonged exposure to light. Do not freeze.
Application	FC - Quality tested
Recommended Usage	Each lot of this antibody is quality control tested by immunofluorescentstainingwith flowcytometricanalysis . The suggested use of this reagent is ≤ 0.25 µg per 10 ⁶ cells in 100 µl volume. It is highly recommended that the reagent be titrated for optimal performance for each application.

* Alexa Fluor® 700 has a maximum emission of 719 nm when it is excited at 633 nm / 635 nm. Prior to using Alexa Fluor® 700 conjugate for flow cytometric analysis, please verify your flow cytometer's capability of exciting and detecting the fluorochrome.

Alexa Fluor® and Pacific Blue™ are trademarks of Life Technologies Corporation.

Excitation Laser	Red Laser (633 nm)
Application Notes	Clone 30-F11 reacts with all isoforms and both CD45.1 and CD45.2 alloantigens of CD45.

Antigen Details

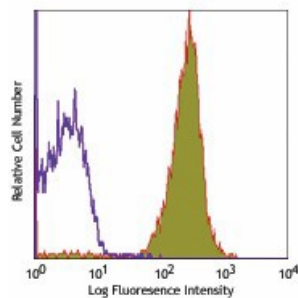
Structure	Protein tyrosine phosphatase (PTP) family, 180-240 kD
Distribution	All hematopoietic cells except mature erythrocytes and platelets
Function	Phosphatase, T and B cell activation
Ligand/Receptor	Galectin-1, CD2, CD3, CD4, TCR, CD22, Thy-1
Cell Type	B cells, Dendritic cells, Mesenchymal Stem Cells, Tregs
Biology Area	Cell Biology, Immunology, Inhibitory Molecules, Innate Immunity, Neuroscience, Neuroscience Cell Markers, Stem Cells



Molecular Family CD Molecules

Gene ID [19264](#)

Product Data



C57BL/6 mouse splenocytes stained with
30-F11 Alexa Fluor® 700

For In-Vitro Diagnostic Use. Not For Human Or Animal Consumption.

*These products may be covered by one or more Limited Use Label Licenses (see the Kreative Catalog or our website, www.kreativetechnolabs.com/ordering#license). Kreative products may not be transferred to third parties, resold, modified for resale, or used to manufacture commercial products, reverse engineer functionally similar materials, or to provide a service to third parties without written approval of Kreative. By use of these products you accept the terms and conditions of all applicable Limited Use Label Licenses. Unless otherwise indicated, these products are for in-vitro Diagnostic Use. Not For Human Or Animal Consumption.